

**Huawei Cloud Astro Canvas**

# Getting Started

**Issue** 01  
**Date** 2025-03-24



**Copyright © Huawei Cloud Computing Technologies Co., Ltd. 2025. All rights reserved.**

No part of this document may be reproduced or transmitted in any form or by any means without prior written consent of Huawei Cloud Computing Technologies Co., Ltd.

## **Trademarks and Permissions**



HUAWEI and other Huawei trademarks are the property of Huawei Technologies Co., Ltd.

All other trademarks and trade names mentioned in this document are the property of their respective holders.

## **Notice**

The purchased products, services and features are stipulated by the contract made between Huawei Cloud and the customer. All or part of the products, services and features described in this document may not be within the purchase scope or the usage scope. Unless otherwise specified in the contract, all statements, information, and recommendations in this document are provided "AS IS" without warranties, guarantees or representations of any kind, either express or implied.

The information in this document is subject to change without notice. Every effort has been made in the preparation of this document to ensure accuracy of the contents, but all statements, information, and recommendations in this document do not constitute a warranty of any kind, express or implied.

## **Huawei Cloud Computing Technologies Co., Ltd.**

Address: Huawei Cloud Data Center Jiaoxinggong Road  
Qianzhong Avenue  
Gui'an New District  
Gui Zhou 550029  
People's Republic of China

Website: <https://www.huaweicloud.com/intl/en-us/>

---

# Contents

---

1 Developing a Traffic Management Large Screen with a Template..... 1

2 Common Practices..... 9

# 1 Developing a Traffic Management Large Screen with a Template

## Scenario

A traffic large screen monitors the city traffic, such as vehicles entering and leaving, road conditions, and traffic indexes, as shown in [Figure 1-1](#). This section shows how to quickly build a traffic management large screen using a template.

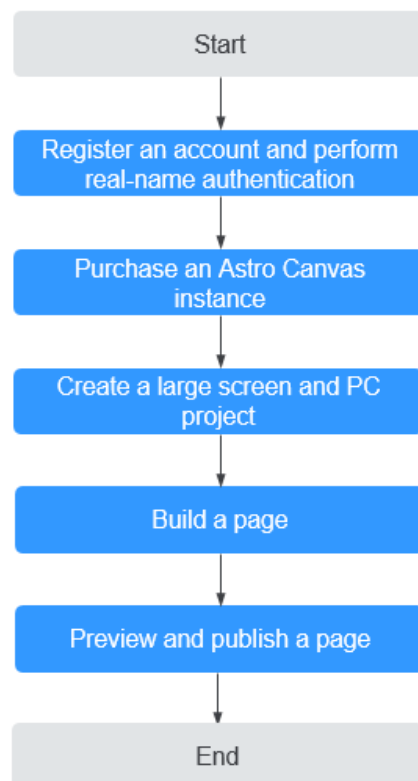
Figure 1-1 A traffic large screen



## Procedure

[Figure 1-2](#) demonstrates the large screen development.

**Figure 1-2** Developing a large screen



1. **Step 1: Registering an Account**

Register a HUAWEI ID. If you already have one, skip this step.

2. **Step 2: Purchasing an Instance**

Purchase an instance first. An instance is an independent resource space. Resources of different instances are isolated from each other. If you have not purchased an instance, you can apply for a free one-month trial of Huawei Cloud Astro Canvas basic edition.

3. **Step 3: Creating a Large Screen and PC Project**

Before creating a page, you need to create a project. A project can be regarded as a collection of service scenarios. A project can have multiple pages.

4. **Step 4: Creating a Page**

You can use the traffic management template to quickly create a large screen.

5. **Step 5: Previewing and Publishing the Page**

Preview your page to ensure the development and editing match the final published effect. If the preview meets your expectations, you can publish the page directly and check the city traffic online.

## Step 1: Registering an Account

Before using this service, you need to register a HUAWEI ID and perform real-name authentication. If you already have a HUAWEI ID, skip the following operations.

- Step 1** Visit the [Huawei Cloud official website](#) and click **Sign Up** in the upper right corner.
- Step 2** Complete registration by referring to [Signing up for a HUAWEI ID and Enabling Huawei Cloud Services](#).

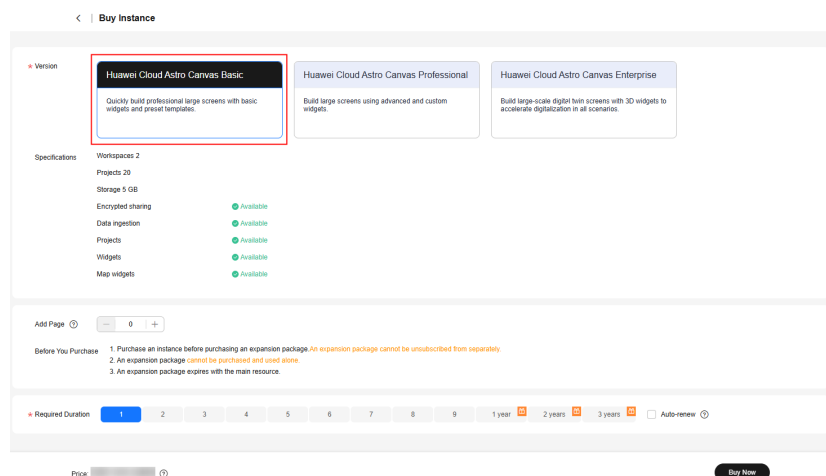
----End

## Step 2: Purchasing an Instance

An instance is an independent resource space. Resources of different instances are isolated from each other. If you have not purchased an instance, you can apply for a free one-month trial of Huawei Cloud Astro Canvas basic edition. This document uses the purchase of a basic instance as an example.

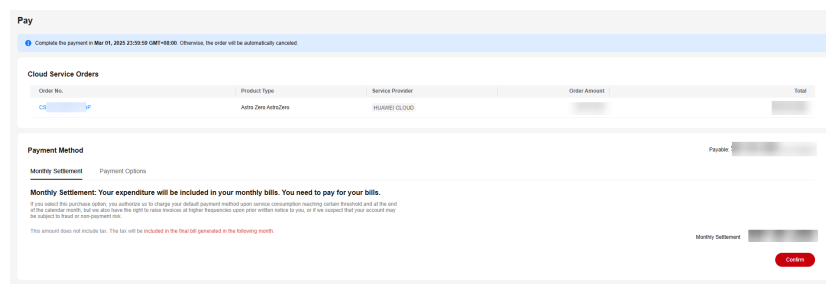
- Step 1** Purchase a Huawei Cloud Astro Canvas instance.
- Step 2** Select the basic edition, set the required duration, and click **Pay Now**.

Figure 1-3 Purchasing an instance



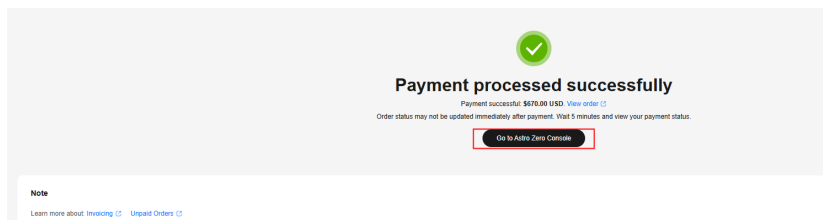
- Step 3** Choose a payment method and then click to confirm your payment.

Figure 1-4 Paying for the order



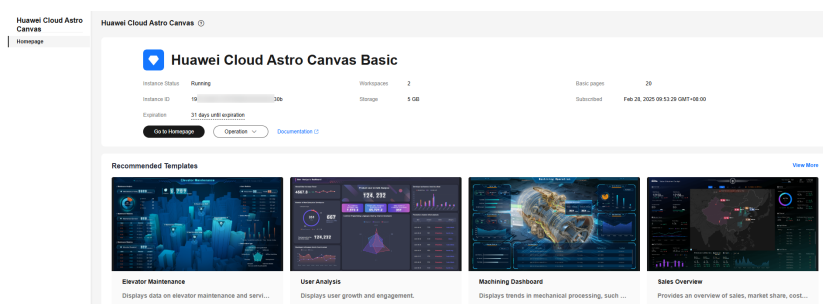
**Step 4** After you pay for the order, click the button to return to the Huawei Cloud Astro Canvas console.

**Figure 1-5** Returning to the console



On the console, you can view the status of the instance. If the instance status is **Running**, it has been installed and is ready for use.

**Figure 1-6** Console



----End

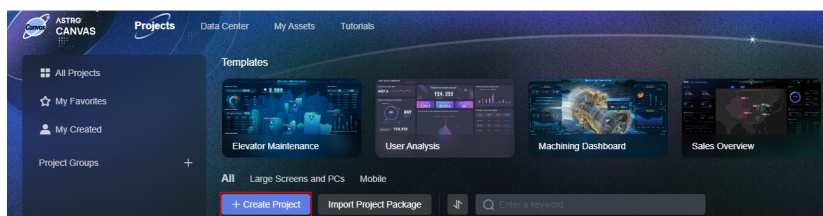
## Step 3: Creating a Large Screen and PC Project

Before creating a page, you need to create a project. A project can be regarded as a collection of service scenarios. A project can have multiple pages.

**Step 1** On the Huawei Cloud Astro Canvas console, click **Go to Homepage**.

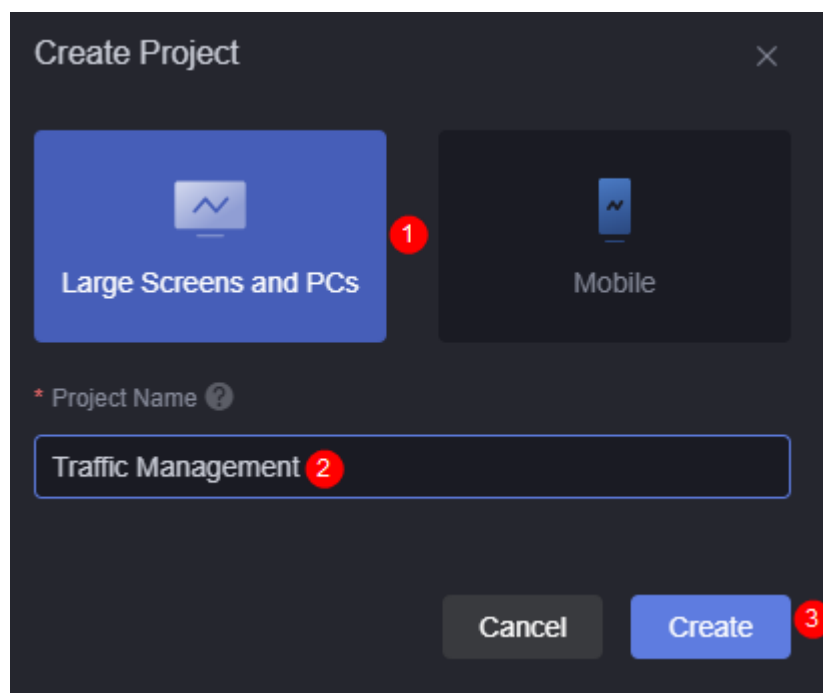
**Step 2** On the **Projects** page, click **Create Project**.

**Figure 1-7** New project page

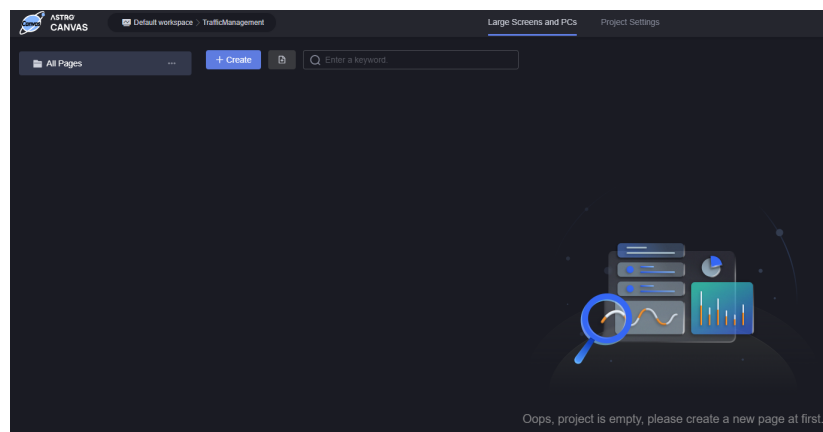


**Step 3** On the displayed page, select **Large Screens and PCs**, enter a project name (for example, "Traffic Management"), and click **Create**.

The project name can contain 1 to 64 characters, including letters, digits, and underscores (\_), but cannot start or end with an underscore (\_).

**Figure 1-8** Creating a large screen and PC project

The created project page is displayed, as shown in [Figure 1-9](#).

**Figure 1-9** Large screen and PC project page

----End

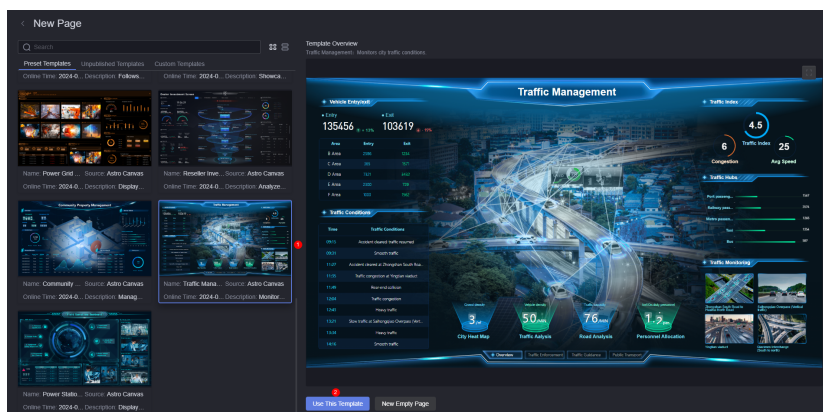
## Step 4: Creating a Page

Reusable pages are provided as preset and custom templates for creating new pages, reducing workload and improving efficiency. This section uses the traffic management template to quickly build a page.

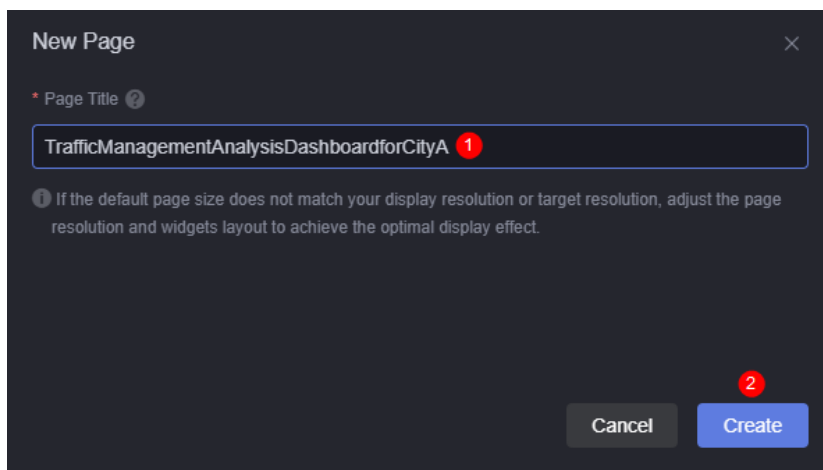
**Step 1** On the **Large Screens and PCs** project, click **Create**.

**Step 2** In the preset templates, select and use the traffic management template.




**Figure 1-10** Selecting the traffic management template

**Step 3** Enter a page title (for example, "Traffic Management Analysis Screen for City A") and click **Create**.

**Figure 1-11** Setting the page title

The large screen development page, for example, [Figure 1-12](#), is displayed. You can directly use this page or perform secondary development based on service requirements.


**Figure 1-12** Large screen development page

**Step 4** Click  in the upper part of the page.

----End

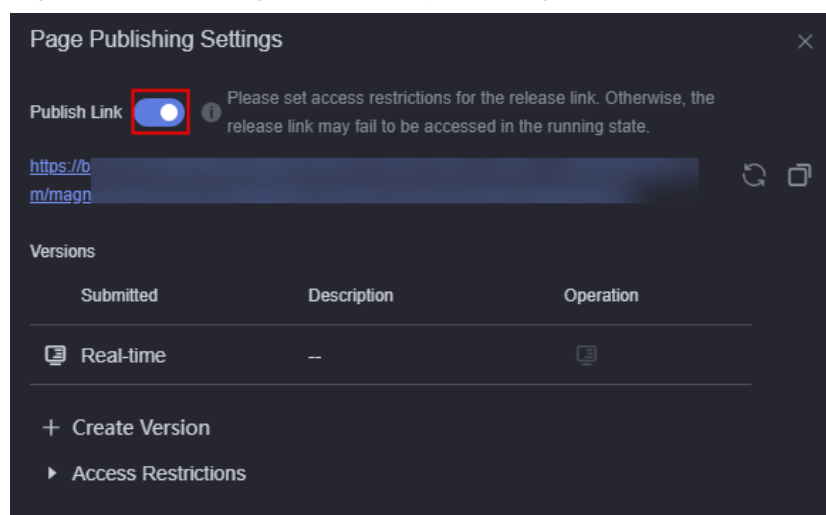
## Step 5: Previewing and Publishing the Page



Preview your page to ensure the development and editing match the final published effect. If the preview meets your expectations, you can publish the page directly and check the city traffic online.

**Step 1** On the created page, click  in the upper part of the page to preview the page.  
If the preview effect does not meet your expectations, you can modify the page.

**Step 2** Click  and turn on the link publishing switch to obtain the page link.

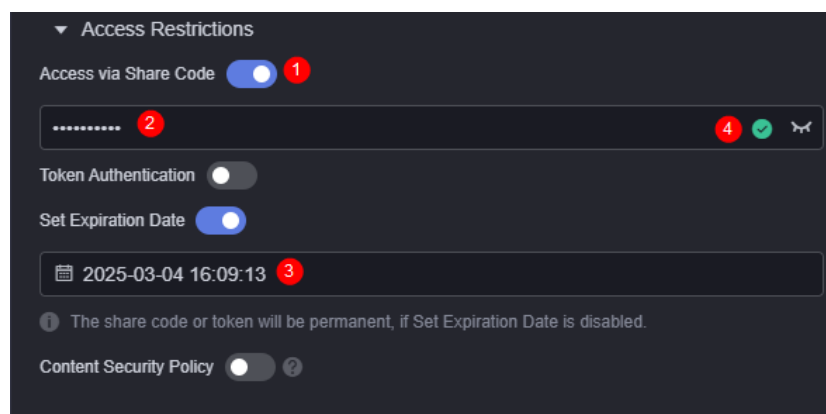
**Figure 1-13** Turning on the link publishing switch




Click  to generate a new link. The original link will be invalid. Click  to copy the link.

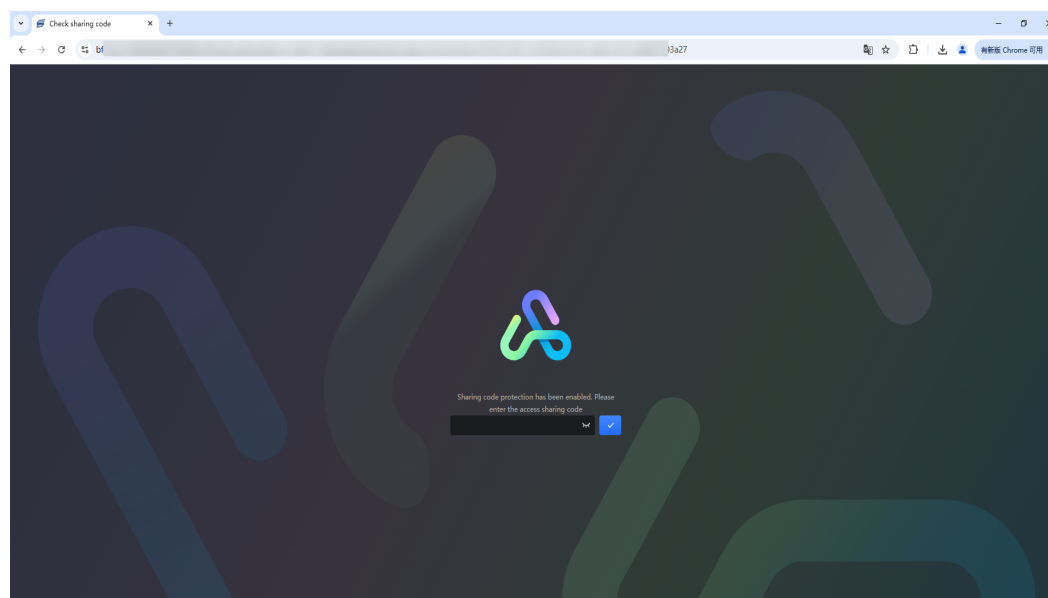
**Step 3** Set access control.

For new projects, set access control for the published link using share code or token authentication. Without this, the link will not be accessible in the runtime environment. The following describes how to set a share code.

**Figure 1-14** Share code settings

- Share code: After setting a page share code, only that code can be used to access the page.
- Token authentication: With this function, you can perform signature authentication on the parameters transmitted during large screen interaction, preventing the URL parameters of the large screen from being modified.
- Content security policy: Enable this function if a large screen page is embedded into a third-party system (for example, in iframe mode) and cross-domain access is involved. This function reduces and reports XSS attacks and mitigates cross-site scripting attacks. In addition to restricting the domains that can load content, you can also specify the protocols that can be used to mitigate packet sniffing attacks.

**Step 4** After setting up, open the link in your browser, enter the share code, and click  to see the city traffic status online.

**Figure 1-15** Entering the share code

----End

# 2 Common Practices

---

After purchasing an instance, you can set up large screen and mobile pages as needed. This section explains common practices for building large screens on Huawei Cloud Astro Canvas to help you use it effectively.

**Table 2-1** Common practices

Practice	Description
<a href="#">Developing a Large Screen for Visit Statistics</a>	This practice describes how to develop a large screen page for collecting statistics on personnel visits.
<a href="#">Developing a Mobile Page for Alarm Handling Statistics</a>	This practice describes how to develop a mobile page for alarm handling statistics.