

MapReduce Service

What's New

Issue 01
Date 2023-03-21



Copyright © Huawei Technologies Co., Ltd. 2023. All rights reserved.

No part of this document may be reproduced or transmitted in any form or by any means without prior written consent of Huawei Technologies Co., Ltd.

Trademarks and Permissions



HUAWEI and other Huawei trademarks are trademarks of Huawei Technologies Co., Ltd.

All other trademarks and trade names mentioned in this document are the property of their respective holders.

Notice

The purchased products, services and features are stipulated by the contract made between Huawei and the customer. All or part of the products, services and features described in this document may not be within the purchase scope or the usage scope. Unless otherwise specified in the contract, all statements, information, and recommendations in this document are provided "AS IS" without warranties, guarantees or representations of any kind, either express or implied.

The information in this document is subject to change without notice. Every effort has been made in the preparation of this document to ensure accuracy of the contents, but all statements, information, and recommendations in this document do not constitute a warranty of any kind, express or implied.

Huawei Technologies Co., Ltd.

Address: Huawei Industrial Base
Bantian, Longgang
Shenzhen 518129
People's Republic of China

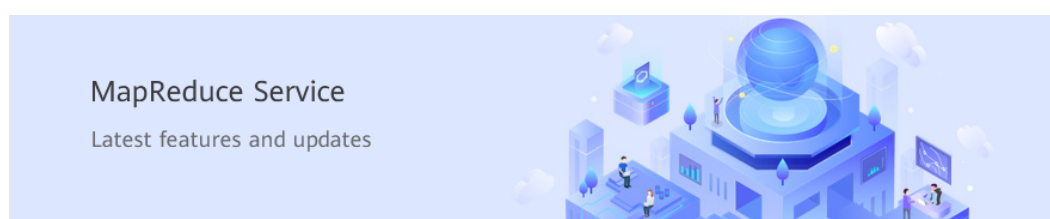
Website: <https://www.huawei.com>

Email: support@huawei.com

Contents

1 What's New..... 1

1 What's New



This following table describes the features released in each MRS version and corresponding documentation updates. New features will be successively released in each region.

January 2023

No.	Feature	Description	Phase	Documentation
1	Added the function of viewing alarm details.	You can use this function to quickly view alarm details.	Commercial use	Viewing the Alarm List
2	The effective date can be configured when a scaling policy is configured for an MRS cluster.	You can set the effective date of a resource plan as required.	Commercial use	Configuring Auto Scaling for an MRS Cluster

July 2022

No.	Feature	Description	Phase	Documentation
1	Added the API for obtaining the file list of a specified directory.	The list of files in a specified directory can be obtained through an API in an MRS cluster.	Commercial use	Obtaining Files from a Specified Directory

May 2022

No.	Feature	Description	Phase	Documentation
1	Supported MRS clusters of the LTS version.	<p>LTS:</p> <ul style="list-style-type: none"> • In addition to basic cluster operations, the LTS version supports version upgrade. • Supports multi-AZ deployment. • Supports the HetuEngine component. 	Commercial use	Using HetuEngine from Scratch