

05 Workspace User Guide (for End Users)

05 Workspace User Guide (for End Users)

Issue 01
Date 2023-12-04



Copyright © Huawei Technologies Co., Ltd. 2023. All rights reserved.

No part of this document may be reproduced or transmitted in any form or by any means without prior written consent of Huawei Technologies Co., Ltd.

Trademarks and Permissions



HUAWEI and other Huawei trademarks are trademarks of Huawei Technologies Co., Ltd.

All other trademarks and trade names mentioned in this document are the property of their respective holders.

Notice

The purchased products, services and features are stipulated by the contract made between Huawei and the customer. All or part of the products, services and features described in this document may not be within the purchase scope or the usage scope. Unless otherwise specified in the contract, all statements, information, and recommendations in this document are provided "AS IS" without warranties, guarantees or representations of any kind, either express or implied.

The information in this document is subject to change without notice. Every effort has been made in the preparation of this document to ensure accuracy of the contents, but all statements, information, and recommendations in this document do not constitute a warranty of any kind, express or implied.

Huawei Technologies Co., Ltd.

Address: Huawei Industrial Base
Bantian, Longgang
Shenzhen 518129
People's Republic of China

Website: <https://www.huawei.com>

Email: support@huawei.com

Security Declaration

Vulnerability

Huawei's regulations on product vulnerability management are subject to "Vul. Response Process". For details about the policy, see the following website:<https://www.huawei.com/en/psirt/vul-response-process>
For enterprise customers who need to obtain vulnerability information, visit:<https://securitybulletin.huawei.com/enterprise/en/security-advisory>

Contents

1 Getting to Know Workspace.....	1
2 Introduction to Terminals.....	4
3 Logging In to a Desktop Using an SC.....	7
4 Logging In to a Desktop Using a TC.....	10
5 Logging In to a Desktop Using a Mobile Terminal.....	13
6 Desktop Assistant.....	15
7 Changing the Login Password.....	18
8 Forbidden Operations.....	21
9 Configuring Dual-Screen Display.....	23
10 Configuring Common Functions.....	26
A Change History.....	29

1 Getting to Know Workspace

Workspace

Getting to Know Wo



It's so heavy.
Who can help me?

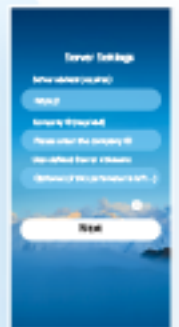
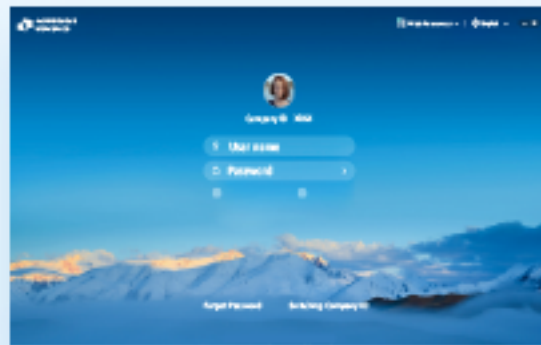
Thin clients
conventiona
are much sn
much lighte



2 Introduction to Terminals

Workspace

Introduction to Terminals



3 Logging In to a Desktop Using an SC

Workspace

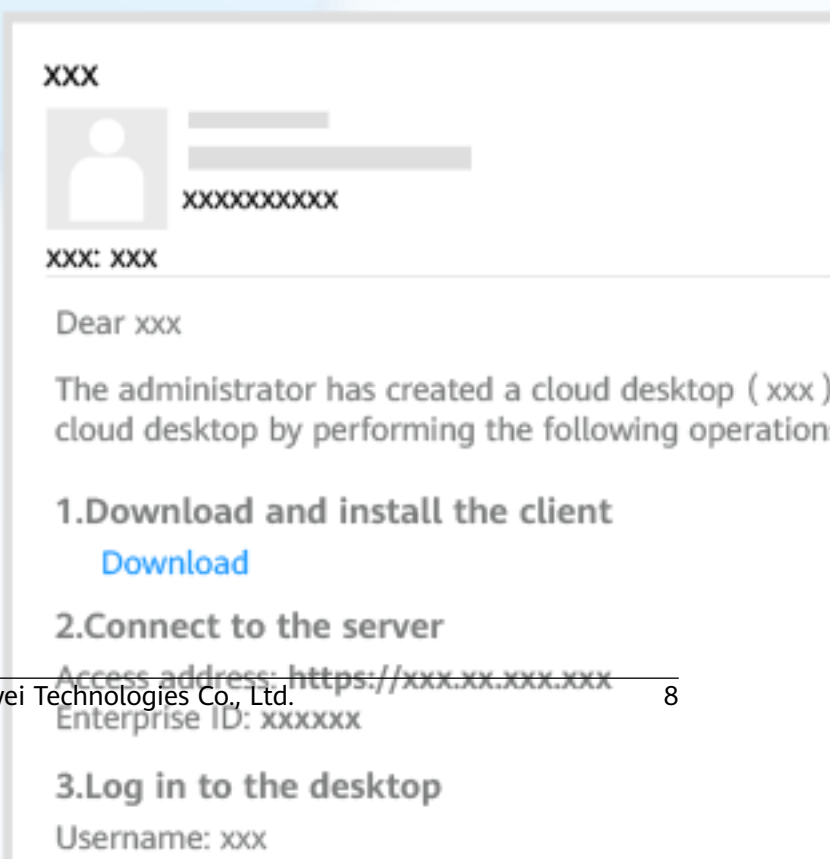
Logging In to a Desktop

Note:

- ★ You can log in to a PC running Windows 10 or ma
- ★ Installation is allowed when the security software

1 Obtain the desktop login information

Note: The notification email for connecting to the A when the AD is not connected. Refer to the email y




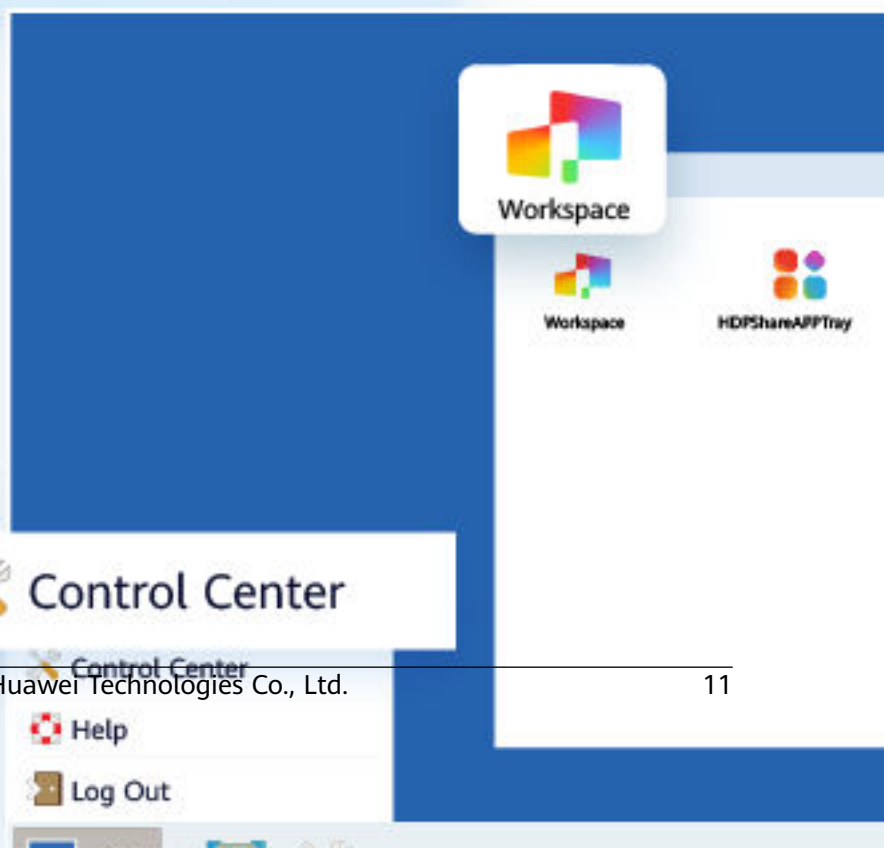
4 Logging In to a Desktop Using a TC

Workspace

Logging In to a Desktop

- 1 Connect the cables and power on the TC.
- 2 For the first login, choose **Start > Control Center** and open the cloud client.

Note: When some TCs are powered on, the cloud client is displayed. You can click  to access the cloud client. The actual TC information prevails.



5 Logging In to a Desktop Using a Mobile Terminal

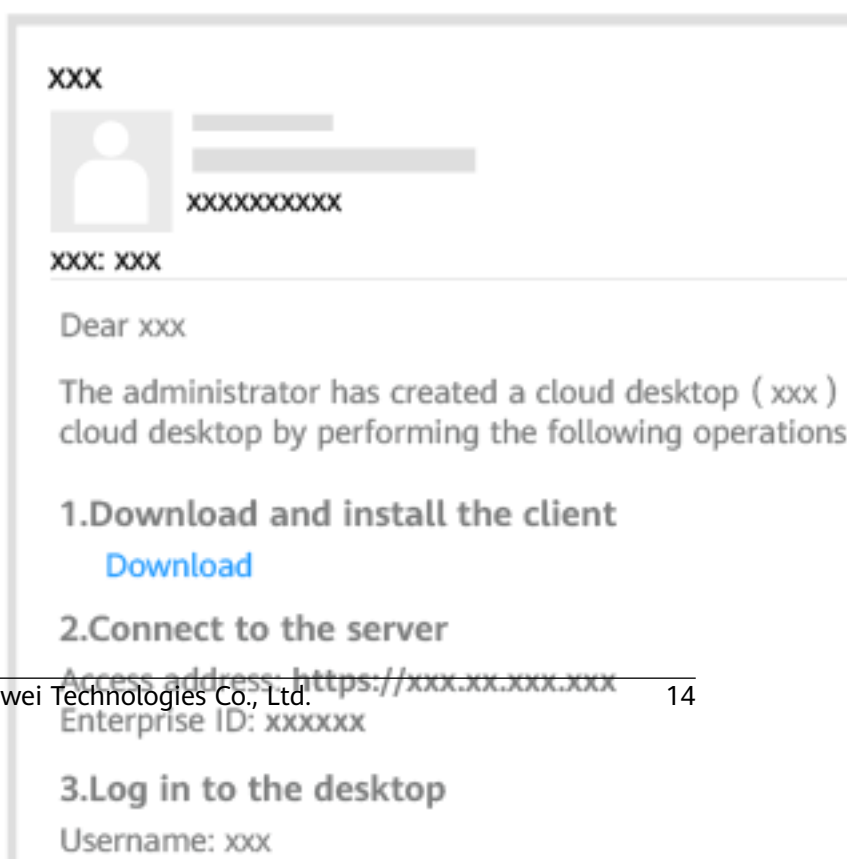
Workspace

Logging In to a Desktop Mobile Terminal

Note: Mobile terminals running Android 6.0 or later can perform operations. The operations on different mobile terminals may vary. The following uses the operations on a mobile terminal.

1 Obtain the desktop login information

Note: The notification email for connecting to the desktop is sent when the AD is not connected. Refer to the email content for details.



6 Desktop Assistant

Workspace

Desktop Assistant

Desktop Floating Bar

The desktop floating bar offers multiple tools for you

Current desktop user

Desktop list

Settings



7 Changing the Login Password

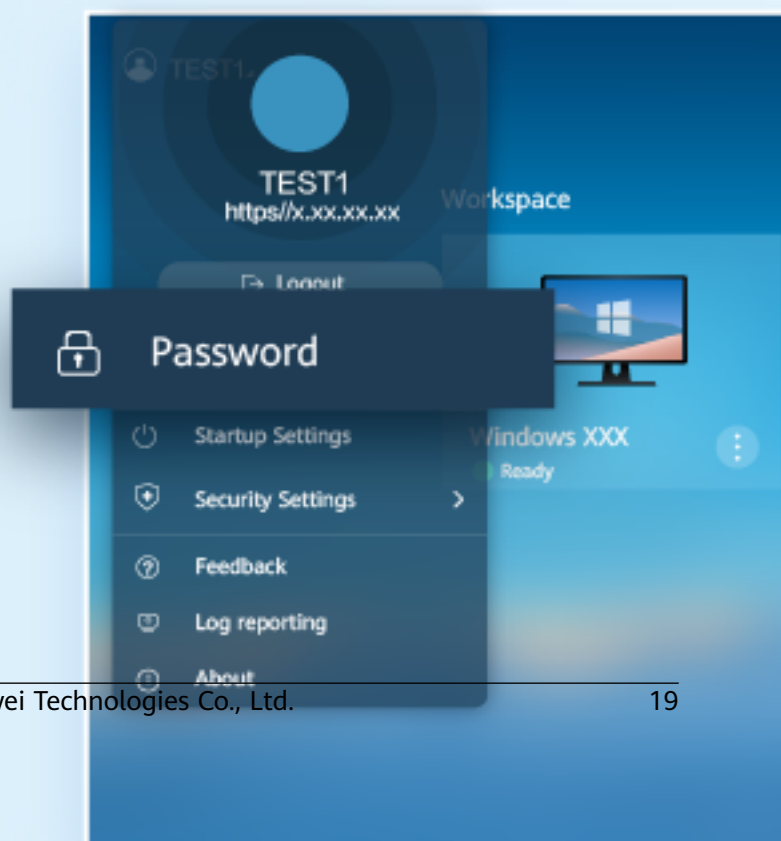
Workspace

Changing the Login Password

Changing the Login Password on the Client

Changing the Login Password on the Client

- 1 On the desktop page, click the **Profile** icon and choose **Password**.



8 Forbidden Operations

① Risky Operations (Processes and Services)

- ◆ Change the default service and startup options in the system configuration.
- ◆ End the LOCAL SERVICE, NETWORK SERVICE, and SYSTEM processes in Task Manager.
- ◆ Disable HDP services.
- ◆ Uninstall the following programs.
 - ◆ Access Agent
 - ◆ Microsoft .NET Framework x Client Profile
 - ◆ Microsoft .NET Framework x Extended
 - ◆ Microsoft Visual C++ xxx Redistributable - xxx

② Risky Operations (Network)

- ◆ Disable NICs, and disable or modify network configurations.
- ◆ Run the script or command for modifying a route, such as route DELETE *.
- ◆ Delete ports 28511, 28512, 28521, and 28522 from Windows firewall exception options.
- ◆ Enable software or tools, such as the IPsec, that can restrict network traffic.

③ Risky Operations (Others)

- ◆ Delete files or folders in C:\Program Files\Huawei.
- ◆ Do not hibernate desktops, which disable hibernation by default.
- ◆ Modify the configuration file of the HDP client (AccessAgent).
- ◆ Run Rabbit Magic or Wopti Utilities to clean or optimize the registry.
- ◆ Install a customized screensaver with complex transformation functions, which consumes system resources and causes a delay in desktop access.

9 Configuring Dual-Screen Display

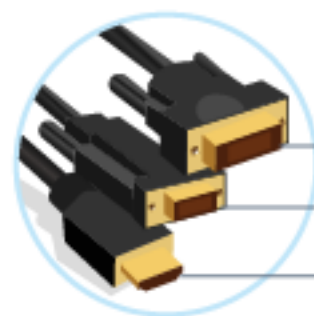
Workspace

Configuring Dual-Screen

Note:

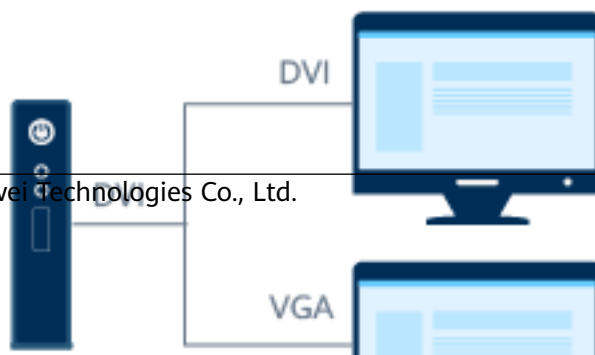
Windows PCs and HT3300 can be configured with dual-screen display.

- 1 **Dual-screen cable:** Connect the PC/TC to the monitor using the dual-screen cable, and check the connector type.



Connector Type

DVI port for PC/TC
and DVI and VGA ports for monitors



DVI port
and VGA

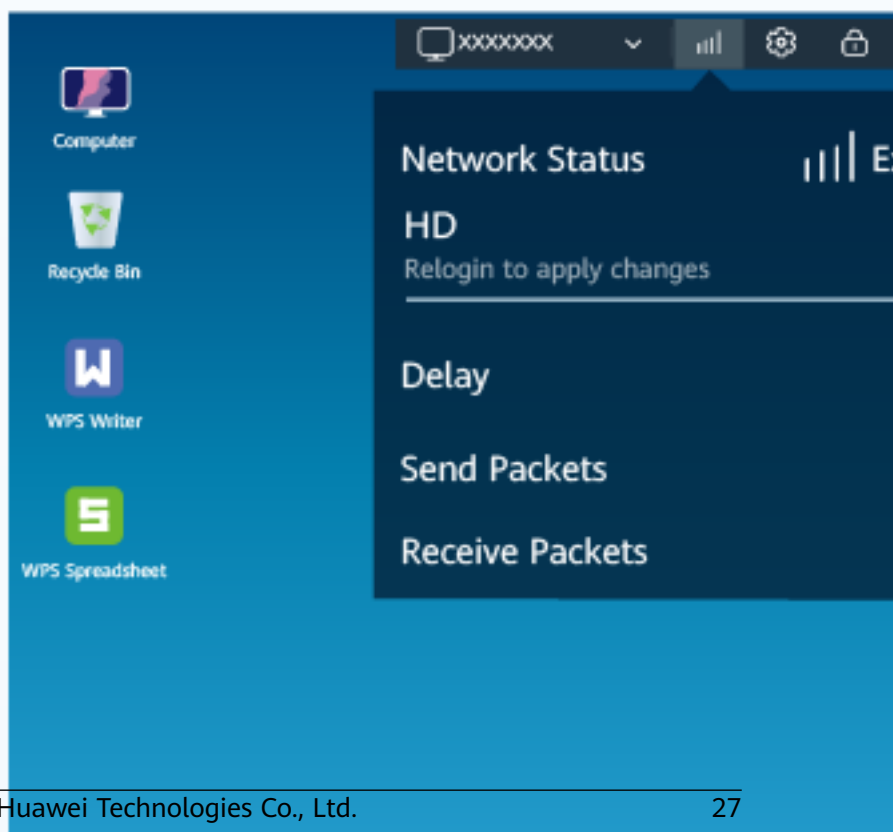
10 Configuring Common Functions

Workspace

Configuring Common Functions

Check the network status

- 1 Click  and check the latency in the



A Change History

Changes between document issues are cumulative. Therefore, the latest document issue contains all updates made in previous issues.

Release Date	Description
2023-10-13	This issue is the first official release.