

Log Tank Service

Getting Started

Issue 01
Date 2025-02-13



Copyright © Huawei Cloud Computing Technologies Co., Ltd. 2025. All rights reserved.

No part of this document may be reproduced or transmitted in any form or by any means without prior written consent of Huawei Cloud Computing Technologies Co., Ltd.

Trademarks and Permissions



HUAWEI and other Huawei trademarks are the property of Huawei Technologies Co., Ltd.

All other trademarks and trade names mentioned in this document are the property of their respective holders.

Notice

The purchased products, services and features are stipulated by the contract made between Huawei Cloud and the customer. All or part of the products, services and features described in this document may not be within the purchase scope or the usage scope. Unless otherwise specified in the contract, all statements, information, and recommendations in this document are provided "AS IS" without warranties, guarantees or representations of any kind, either express or implied.

The information in this document is subject to change without notice. Every effort has been made in the preparation of this document to ensure accuracy of the contents, but all statements, information, and recommendations in this document do not constitute a warranty of any kind, express or implied.

Contents

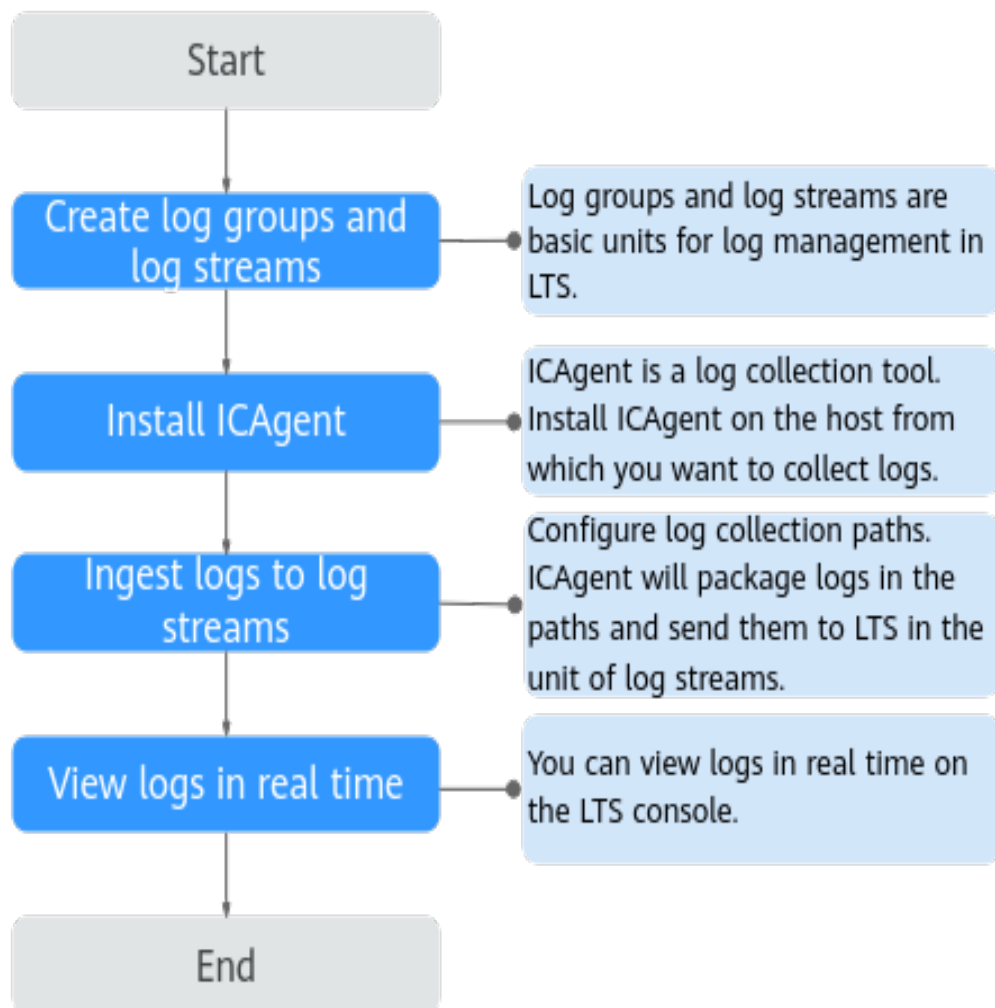
1 Overview.....	1
2 Creating Log Groups and Log Streams.....	2
3 Installing ICAgent.....	5
4 Ingesting Logs.....	7
5 Viewing Logs in Real Time.....	9

1 Overview

To help you quickly get started with Log Tank Service (LTS), the following sections will show you how to install ICAgent on a Linux host and ingest logs from the host to LTS.

For details, see [Figure 1-1](#).

Figure 1-1 Flowchart



2 Creating Log Groups and Log Streams

Prerequisites

You have obtained an account and its password for logging in to the console.

Creating a Log Group

1. Log in to the management console and choose **Management & Deployment > Log Tank Service**.
2. On the **Log Management** page, click **Create Log Group**.
3. In the dialog box displayed, set log group parameters by referring to [Table 2-1](#).

Table 2-1 Log group parameters

Parameter	Description
Log Group Name	<ul style="list-style-type: none">• Enter 1 to 64 characters, including only letters, digits, hyphens (-), underscores (_), and periods (.). Do not start with a period or underscore or end with a period.• Collected logs are sent to log streams of the corresponding log groups. If there are too many logs to collect, separate logs into different log groups based on log types, and name log groups in an easily identifiable way.
Enterprise Project Name	Select an enterprise project. You can click View Enterprise Projects to view all enterprise projects. Enterprise projects allow you to manage cloud resources and users by project.
Log Retention (Days)	Specify the log retention duration for the log group, that is, how many days the logs will be stored in LTS after being reported to LTS. By default, logs are retained for 30 days (customizable for 1 to 30 days).

Parameter	Description
Tag	<p>Tag the log group as required. Click Add Tags, enter a tag key and value, and enable Apply to Log Stream.</p> <ul style="list-style-type: none"> To add more tags, repeat this step. A maximum of 20 tags can be added. To delete a tag, click Delete in the Operation column of the tag. A tag key can contain up to 128 characters, and a tag value can contain up to 255 characters. A tag key must be unique. If a tag is used by a transfer task, you need to modify the task configuration after deleting the tag.
Remark	Enter remarks. The value contains up to 1,024 characters.

- Click **OK**. The created log group will be displayed in the log group list.

Creating a Log Stream


- Click  on the left of a log group name and click **Create Log Stream**.
- In the dialog box displayed, set log stream parameters by referring to [Table 2-2](#).

Table 2-2 Log stream parameters

Parameter	Description
Log Group Name	The name of the target log group is displayed by default.
Log Stream Name	Enter 1 to 64 characters, including only letters, digits, hyphens (-), underscores (_), and periods (.). Do not start with a period or underscore or end with a period.
Enterprise Project Name	Select the required enterprise project. The default value is default . You can click View Enterprise Projects to view all enterprise projects.

Parameter	Description
Log Retention (Days)	<p>Specify the log retention duration for the log stream, that is, how many days the logs will be stored in LTS after being reported to LTS.</p> <p>By default, logs are retained for 30 days (customizable for 1 to 30 days).</p> <ul style="list-style-type: none"> • If you enable Log Retention (Days) for the log stream, logs are retained for the duration set for the log stream. • If you disable Log Retention (Days) for the log stream, logs are retained for the duration set for the log group. • The logs that exceed the retention period will be automatically deleted. You can transfer logs to OBS buckets for long-term storage.
Tag	<p>You can tag log streams as required. Click Add Tags and enter a tag key and tag value.</p> <ul style="list-style-type: none"> • To add more tags, repeat this step. A maximum of 20 tags can be added. • To delete a tag, click Delete in the Operation column of the tag. • A tag key can contain up to 128 characters, and a tag value can contain up to 255 characters. • A tag key must be unique. • If a tag is used by a transfer task, you need to modify the task configuration after deleting the tag.
Remark	Enter remarks. The value contains up to 1,024 characters.

3. Click **OK**. The created log stream will be displayed under the target log group.

3 Installing ICAgent

ICAgent is the log collection tool of LTS. Install ICAgent on a host from which you want to collect logs.

If ICAgent has been installed on the host when you use other cloud services, skip the installation.

Prerequisites

Before installing ICAgent, ensure that the time and time zone of your local browser are consistent with those of the host.

Installing ICAgent

- Step 1** Log in to the management console and choose **Management & Deployment > Log Tank Service**.
- Step 2** Choose **Host Management > Hosts** in the navigation pane.
- Step 3** Click **Install ICAgent** in the upper right corner.
- Step 4** Set **Host** to **Intra-Region Hosts**.
- Step 5** Set **OS** to **Linux**.
- Step 6** Set **Installation Mode** to **Obtain AK/SK**.

NOTE

Ensure that the public account and AK/SK will not be deleted or disabled. If the AK/SK is deleted, the ICAgent cannot report data to LTS.

Obtain and use the AK/SK of a public account.

The Access Key ID/Secret Access Key (AK/SK) can be obtained on the **My Credentials** page. The procedure is as follows:

1. Hover the mouse pointer over the username in the upper right corner of the page and select **My Credentials**.
2. On the **My Credentials** page, choose **Access Keys**.
3. Click **Create Access Key** and enter a description.

 **NOTE**

Up to 2 access keys can be created for each user. An access key can be downloaded only right after it is created. If the **Create Access Key** button is grayed out, delete an access key first before creating one.

4. Click **OK**, download the AK/SK, and keep it secure.

Step 7 Click **Copy Command** to copy the ICAgent installation command.

Step 8 Log in as user **root** to the host (for example, by using a remote login tool such as PuTTY). Run the copied command and enter the obtained AK/SK to install ICAgent.

When message **ICAgent install success** is displayed, ICAgent has been installed in the **/opt/oss/servicemgr/** directory of the host. You can then view the ICAgent status on the **Hosts** tab of the **Host Management** page on the LTS console.

----End

4 Ingesting Logs

The following shows how you can ingest host logs to LTS.

When ICAgent is installed, configure the paths of host logs that you want to collect in log streams. ICAgent will pack logs and send them to LTS in the unit of log streams.

Prerequisites

- You have created log groups and log streams.
- You have installed ICAgent.

Procedure

Step 1 Log in to the management console and choose **Management & Deployment > Log Tank Service**.

Step 2 In the navigation pane, choose **Log Ingestion > Ingestion Center**.

Step 3 Click **ECS (Elastic Cloud Server)** to configure log ingestion.

Step 4 Select a log stream.

1. Select a log group from the drop-down list of **Log Group**. If there are no desired log groups, click **Create Log Group** to create one.
2. Select a log stream from the drop-down list of **Log Stream**. If there are no desired log streams, click **Create Log Stream** to create one.
3. Click **Next: (Optional) Select Host Group**.

Step 5 Select one or more host groups.

1. In the host group list, select one or more host groups to collect logs. If there are no desired host groups, click **Create** in the upper left corner of the list. On the displayed **Create Host Group** page, create a host group. For details, see [Creating a Host Group \(IP Address\)](#).

 **NOTE**

You can skip this step and configure host groups as follows after the ingestion configuration is complete. However, you are advised to configure host groups during the first ingestion to ensure that the collection configuration takes effect.

- Choose **Host Management** in the navigation pane, click the **Host Groups** tab, and complete the association.
- Choose **Log Ingestion** in the navigation pane, click an ingestion configuration, and make the association on the details page.

2. Click **Next: Configurations**.

Step 6 Configure the collection.

For details, see [Configurations](#).

Step 7 (Optional) Configure structured logs.

Step 8 (Optional) Configure indexes.

Step 9 Click **Submit** Click **Back to Ingestion Configurations** to check the ingestion details. You can also click **View Log Stream** to view the log stream to which logs are ingested.

----End

5 Viewing Logs in Real Time

After the log ingestion is configured, you can view the reported logs on the LTS console in real time.

Prerequisites

- You have created log groups and log streams.
- You have installed ICAgent.
- You have ingested logs.

Viewing Logs in Real Time

1. Log in to the management console and choose **Management & Deployment > Log Tank Service**.
2. In the log group list, click the name of the target log group.
3. Or in the log stream list, click the name of the target log stream.
4. On the log stream details page, click **Real-Time Logs** to view logs in real time.

Logs are reported to LTS once every 5 seconds. You may wait for at most 5 seconds before the logs are displayed.

You can control log display by clicking **Clear** or **Pause** in the upper right corner.

- **Clear**: Displayed logs will be cleared from the real-time view.
- **Pause**: Loading of new logs to the real-time view will be paused.

After you click **Pause**, the button changes to **Continue**. You can click **Continue** to resume the log loading to the real-time view.

NOTE

Stay on the **Real-Time Logs** tab to keep updating them in real time. If you leave the **Real-Time Logs** tab, logs will stop being loaded in real time.