

Image Management Service

Service Overview

Issue 03
Date 2023-08-03



Copyright © Huawei Technologies Co., Ltd. 2023. All rights reserved.

No part of this document may be reproduced or transmitted in any form or by any means without prior written consent of Huawei Technologies Co., Ltd.

Trademarks and Permissions



HUAWEI and other Huawei trademarks are trademarks of Huawei Technologies Co., Ltd.

All other trademarks and trade names mentioned in this document are the property of their respective holders.

Notice

The purchased products, services and features are stipulated by the contract made between Huawei and the customer. All or part of the products, services and features described in this document may not be within the purchase scope or the usage scope. Unless otherwise specified in the contract, all statements, information, and recommendations in this document are provided "AS IS" without warranties, guarantees or representations of any kind, either express or implied.

The information in this document is subject to change without notice. Every effort has been made in the preparation of this document to ensure accuracy of the contents, but all statements, information, and recommendations in this document do not constitute a warranty of any kind, express or implied.

Contents

1 What Is Image Management Service?	1
2 Product Advantages	4
3 Application Scenarios	6
4 Features	7
5 Constraints	10
6 Supported OSs	15
6.1 OSs Supported by Different Types of ECSs	15
6.2 External Image File Formats and Supported OSs	20
6.3 OSs Supporting UEFI Boot Mode	20
7 Billing	23
8 Permissions	25
9 Basic Concepts	28
9.1 Region and AZ	28
9.2 Common Image Formats	29
10 Related Services	31
11 Change History	34

1 What Is Image Management Service?

Overview

An image is a cloud server or disk template that contains an operating system (OS), service data, or necessary software.

Image Management Service (IMS) allows you to manage the entire lifecycle of your images. You can create ECSs or BMSs from public, private, or shared images. You can also create a private image from a cloud server or an external image file to make it easier to migrate workloads to the cloud or on the cloud.

Image Types

IMS provides public, private, and shared images. Public images are provided by the cloud platform, private images are created by users, and shared images are private images that other users shared with you.

Image Type	Description
Public image	<p>A public image is a standard, widely used image. It contains an OS and preinstalled public applications and is available to all users. Public images are very stable and their OS and any included software have been officially authorized for use. If a public image does not contain the environments or software you need, you can use a public image to create an ECS and then deploy the required environments or software on it.</p> <p>Public images include the following OSs to choose from: Ubuntu and CentOS</p> <p>For more information about public images, see Managing Public Images.</p>

Image Type	Description
Private image	<p>A private image contains an OS or service data, preinstalled public applications, and a user's personal applications. Private images are only available to the users who created them.</p> <p>A private image can be a system disk image, data disk image, ISO image, or full-ECS image.</p> <ul style="list-style-type: none">• A system disk image contains an OS and preinstalled software for various services. You can use a system disk image to create ECSs and migrate your services to the cloud.• A data disk image contains only service data. You can use a data disk image to create EVS disks and use them to migrate your service data to the cloud.• An ISO image is created from an external ISO image file. It is a special image that is not available on the ECS console.• A full-ECS image contains an OS, preinstalled software, and service data. A full-ECS image is created using differential backups and the creation takes less time than creating a system or data disk image of the same size.
Shared image	<p>A shared image is a private image another user has shared with you.</p> <p>For more information about shared images, see Sharing Images.</p>

IMS Functions

IMS provides:

- Public images that contain common OSs
- Creation of a private image from an ECS or external image file
- Public image management, such as searching for images by OS type, name, or ID, and viewing the image ID, system disk size, and image features such as user data injection and disk hot swap
- Private image management, such as modifying image attributes, sharing images, and replicating images
- Creation of ECSs using an image

Access Methods

The public cloud provides a web-based service management platform (a management console). You can access the IMS service through HTTPS APIs or from the management console.

- API
If you need to integrate IMS into a third-party system for secondary development, use APIs to access the IMS service. For details, see [Image Management Service API Reference](#).

- Management console
If no integration with a third-party system is needed, use the management console. Log in to the management console and choose **Compute > Image Management Service** on the homepage.
If you do not have an account, sign up for one before logging in to the management console. For details about how to register an account, see [Account Registration Process](#).

2 Product Advantages

IMS provides convenient, secure, flexible, and efficient image management. Images allow you to deploy services faster, more easily and more securely.

Saving Time and Effort

- Deploying services on cloud servers is much faster and easier when you use images.
- A private image can be created from an ECS, a BMS, or an external image file. It can be a system, disk, or full-ECS image that suites your different needs.
- Private images can be transferred between accounts, regions, or cloud platforms through image sharing, replication, and export.

Secure

- Public images use mainstream OSs such as Ubuntu and CentOS. These OSs have been thoroughly tested to provide secure and stable services.
- Multiple copies of image files are stored on Object Storage Service (OBS), which provides excellent data reliability and durability.
- Private images can be encrypted for data security by using envelope encryption provided by Key Management Service (KMS).

Flexible

- You can manage images through the management console or using APIs.
- You can use a public image to deploy a general-purpose environment, or use a private image to deploy a custom environment.
- You can use IMS to migrate servers to the cloud or on the cloud, and back up server running environments.

Unified

- IMS provides a self-service platform to simplify image management and maintenance.
- IMS allows you to batch deploy and upgrade application systems, improving O&M efficiency and ensuring consistency.
- Public images comply with industry standards. Preinstalled components only include clean installs, and only kernels from well-known third-party vendors

are used to make it easier to transfer images from or to other cloud platforms.

Comparison Between Image-based Deployment and Manual Deployment

Table 2-1 Image-based deployment and manual deployment

Item	Image-based Deployment	Manual Deployment
Time required	2 to 5 minutes	1 to 2 days
Complexity	Quickly create ECSs by using public images or private images.	Select an appropriate OS, database, and various software packages based on your service requirements. Then, install and commission them.
Security	You only need to identify sources of shared images. Public and private images have been thoroughly tested to ensure security and stability.	The security depends on the skills of the R&D or O&M personnel.

3 Application Scenarios

- **Migrating servers to the cloud or on the cloud**
You can import local images to the cloud platform and use the images to quickly create cloud servers for service migration to the cloud. A variety of image types can be imported, including VHD, VMDK, QCOW2, and RAW.
- **Deploying a specific software environment**
Use shared images to quickly build custom software environments without having to manually configure environments or install any software. This is especially useful for Internet startups.
- **Batch deploying software environments**
Prepare an ECS with an OS, the partition arrangement you prefer, and software installed to create a private image. You can use the image to create batch clones of your custom ECS.
- **Backing up server environments**
Create an image from an ECS to back up the ECS. If the ECS breaks down due to software faults, you can use the image to restore the ECS.

4 Features

Private Image Lifecycle

After you create a private image, you can use it to create cloud servers or EVS disks. You can also share the image with other tenants. shows the lifecycle of a private image.

Features

Table 4-1 Creating a private image

Feature	Description	Helpful Link
Creating a system disk image from an ECS or BMS	After creating a cloud server, you can set it up, installing whatever software or application environment you need, and then use the preconfigured server to create a system disk image. You can create new cloud servers with the custom configurations from the image, which frees you from a lot of repetitive work.	<ul style="list-style-type: none">• Creating a System Disk Image from a Linux ECS• Creating a Private Image from a BMS
Creating a system disk image from an external image file	You can import a system disk from your local PC or other cloud platforms, and use the imported image to create new cloud servers or reinstall or change the OSs of existing cloud servers.	<ul style="list-style-type: none">• Creating a Linux System Disk Image from an External Image File• Creating a BMS Private Image from an External Image File• Quickly Importing an Image File

Feature	Description	Helpful Link
Creating a system disk image from an ISO file	In contrast with other image formats, an ISO file can be used only after it is decompressed using a tool, such as UltraISO or VirtualBox. For details about the image creation process, see the Related Operations column in the table.	<ul style="list-style-type: none">• Creating a Linux System Disk Image from an ISO File• Creating a Linux Image Using VirtualBox and an ISO File
Creating a system disk image using Packer	Packer is an open-source tool that can be used to create custom images. It simplifies private image creation by changing the image creation process to a form in which management code can be configured. In this way, users can flexibly customize images as needed.	Creating a Private Image Using Packer
Creating a data disk image from an external image file	You can import the data disk image of a local server or a server on another cloud platform to HUAWEI CLOUD and then the image can be used to create EVS disks.	Creating a Data Disk Image from an External Image File
Creating a full-ECS image from an ECS, CSBS backup, or CBR backup	You can use an ECS with data disks to create a full-ECS image, complete with an OS, various applications, and your service data. The full-ECS image then can be used to quickly provision identical ECSs for data migration. A full-ECS image can be created by using an ECS, CSBS backup, or CBR backup.	<ul style="list-style-type: none">• Creating a Full-ECS Image from an ECS• Creating a Full-ECS Image from a CSBS Backup• Creating a Full-ECS Image from a CBR Backup
Creating an ECS from a private image	After a system disk image or full-ECS image is created, you can click Apply for Server in the row that contains the image to create an ECS.	Creating an ECS from an Image

Table 4-2 Managing private images

Feature	Description	Helpful Link
Modifying an image	To facilitate private image management, you can modify the following attributes of an image: name, description, minimum memory, maximum memory, and advanced functions such as NIC multi-queue and SR-IOV driver.	Modifying an Image
Sharing images	You can share an image with other HUAWEI CLOUD accounts. These accounts can use your shared private image to quickly create ECSs or EVS disks.	<ul style="list-style-type: none">• Sharing Images• Image Sharing FAQs
Exporting images	You can export private images to your OBS bucket and download them to your local PC for backup.	Exporting an Image
Encrypting images	You can create encrypted images to improve data security. The encryption mode is KMS envelope encryption. Encrypted images can be created from external image files or encrypted ECSs.	<ul style="list-style-type: none">• Encryption Method• Creating Encrypted Images
Replicating images within a region	By replicating images within a region, you can convert encrypted and unencrypted images into each other or enable some advanced features, for example, quick instance provisioning.	Replicating Images Within a Region
Tagging an image	You can tag your private images for easy management and search.	Tagging an Image
Exporting image list	You can export the public or private image list in a given region in CSV format, facilitating local maintenance and query.	Exporting Image List
Deleting images	You can delete images that will be no longer used. Deleting an image does not affect the ECSs created from that image.	Deleting Images

5 Constraints

This section describes the constraints on using IMS.

- [Creating a private image](#)
- [Importing a private image](#)
- [Sharing images](#)
- [Replicating an image](#)
- [Exporting an image](#)
- [Encrypting an image](#)
- [Deleting images](#)
- [Creating cloud servers from an image](#)
- [Tagging an image](#)

Table 5-1 Constraints on creating a private image

Item	Constraint
Maximum number of private images that can be created in a region	50 If you need more, submit a service ticket to increase your quota. For details, see How Do I Increase the Image Quota?
Maximum number of concurrent tasks for creating private images	40 NOTE Currently, only one image can be created in each task.
Creating a system disk image from an ECS or BMS	<ul style="list-style-type: none">• The ECS must be in the Stopped or Running state.• The BMS must be in the Stopped state and must be booted from an EVS disk rather than a local disk.
Creating a data disk image from an ECS	<ul style="list-style-type: none">• The ECS must be in the Stopped or Running state.• A data disk image can be used to create only one data disk at a time.

Item	Constraint
Disk capacity	<ul style="list-style-type: none"> The system disk capacity of an ECS or a BMS used to create a system disk image must be no greater than 1 TB. If it is greater than 1 TB for an ECS, you can only use the ECS to create a full-ECS image. The data disk capacity of an ECS used to create a data disk image must be no greater than 1 TB. If it is greater than 1 TB, you can only use the ECS to create a full-ECS image.
Creating a full-ECS image from an ECS or a CSBS or CBR backup	<ul style="list-style-type: none"> The ECS must be in the Stopped or Running state. A CSBS or CBR backup can be used to create only one full-ECS image at a time. A full-ECS image is shareable with other tenants only when it is created from a CBR backup or from an ECS that has never had a CSBS backup. A full-ECS image cannot be exported or replicated within a region.

Table 5-2 Constraints on importing a private image

Item	Constraint
Importing a system disk image from an external image file	For details about constraints on external image files, see Preparing an Image File (Linux) .
Importing a system disk image from an ISO file	<ul style="list-style-type: none"> Register the ISO file as an ISO image, use the ISO image to create a temporary ECS, install an OS and related drivers on the ECS, and use the ECS to create a system disk image. The ISO image cannot be replicated, exported, or encrypted.
Importing a data disk image from an external image file	The data disk capacity can be 40–2048 GB, and it must also be at least as big as the data disk in the image file.
Image format	VMDK, VHD, QCOW2, RAW, VHDX, QED, VDI, QCOW, ZVHD2, and ZVHD

Item	Constraint
Image size	<p>The image size cannot exceed 128 GB.</p> <p>If the image size is between 128 GB and 1 TB, convert the image file into the RAW or ZVHD2 format and import the image through fast import.</p> <ul style="list-style-type: none">For details about how to convert the image file format, see Converting the Image Format Using qemu-img-hw.For details about fast import, see Quickly Importing an Image File.

Table 5-3 Constrains on sharing images

Item	Constraint
Maximum number of tenants an image can be shared with	System disk image or data disk image: 128 Full-ECS image: 10
Maximum number of shared images that a tenant can receive	No limit
Private image status	Normal
Image sharing	Encrypted images, images published in the Marketplace, and full-ECS images created from a CSBS backup cannot be shared with others.
Region	<ul style="list-style-type: none">There are constraints on the region when cloud servers are created from a shared image. For example, a shared image can be used to create cloud servers only in the same region.

Table 5-4 Constraints on replicating an image

Item	Constraint
Maximum size of an image	128 GB
Maximum number of concurrent replication tasks per tenant	5
Private image status	Normal

Item	Constraint
Replicating images within a region	<ul style="list-style-type: none"> • Full-ECS images cannot be replicated within the same region. • Private images created using ISO files do not support in-region replication.

Table 5-5 Constraints on exporting an image

Item	Constraint
Maximum size of an exported image	<p>1 TB</p> <p>Images larger than 128 GB only support fast export. For details about fast export, see Comparison Between Import and Fast Import, and Between Export and Fast Export.</p>
Formats of exported image files	VMDK, VHD, QCOW2, ZVHD, and ZVHD2
Private image status	Normal
Exporting an image	<ul style="list-style-type: none"> • Encrypted images cannot be exported through fast export. • An image can only be exported to a Standard bucket that is in the same region as the image. • The following private images cannot be exported: <ul style="list-style-type: none"> - Full-ECS images - ISO images - Private images created from an Ubuntu public image • The image size must be less than 1 TB. Images larger than 128 GB support only fast export.

Table 5-6 Constraints on other image operations

Operation	Item	Constraint
Encrypting an image	Creating an encrypted image from an encrypted ECS or an external image file	<ul style="list-style-type: none"> • An encrypted image cannot be shared with other tenants. • The key used for encrypting an image cannot be changed.
Deleting images	Private image status	A published private image cannot be deleted.

Operation	Item	Constraint
Creating cloud servers from an image	Number of cloud servers that can be concurrently created using a system disk image	Recommended value: ≤ 100
Tagging an image	Maximum number of tags that can be added to a private image	10

Other Constraints

- If an ECS is frozen due to overdue payment, it cannot be used to create a private image. You must renew the ECS before using it to create a private image.
- A private image created from an x86 ECS cannot be used to create a Kunpeng ECS or change the OS of a Kunpeng ECS.
- When you use an external image file to create a private image and select **x86** for **Architecture**, the private image cannot be used to create a Kunpeng ECS or change the OS of a Kunpeng ECS.
- A private image containing a 32-bit OS cannot be used to create an ECS with larger than 4 GB of memory because the total available address space for a 32-bit OS is 4 GB.

6 Supported OSs

6.1 OSs Supported by Different Types of ECSs

This section describes the OSs supported by different types of ECSs.

- [x86 ECSs](#)
- [Kunpeng ECSs](#)

x86 ECSs

- [Table 6-1](#) lists the OSs supported by the following ECSs:
 - General-purpose T6
 - General computing S2, S3, S6, SN3
 - General computing-plus C3, C6
 - Memory-optimized M2, M3, M6
 - High-performance computing HC2, H3
 - Disk-intensive D2, D3, D6
- [Table 6-2](#) lists the OSs supported by the following ECSs:
 - General computing-plus C3ne, C6, C6s
 - Memory-optimized M3ne
- [Table 6-3](#) lists the OSs supported by the following ECSs:
 - Large-memory E3
- [Table 6-4](#) lists the OSs supported by the following ECSs:
 - Ultra-high I/O I3, IR3
- For the OSs supported by GPU-accelerated ECSs, see the GPU product description.

 **NOTE**

- It is recommended that you use the official OS release versions. Do not tailor or customize the release versions, or problems may occur.
- OS vendors do not always update OS release versions regularly. Some versions are no longer maintained, and these deprecated versions no longer receive security patches. Ensure that you read the update notifications from OS vendors and update your OS so that it runs properly.

Table 6-1 Supported OS versions

OS	OS Version
CentOS	64-bit: CentOS 6.10, 6.9, 6.8, 6.7, 6.6, 6.5, 6.4, and 6.3 64-bit: CentOS 7.9, 7.8, 7.7, 7.6, 7.5, 7.4, 7.3, 7.2, 7.1, and 7.0 64-bit: CentOS 8.3, 8.2, 8.1, and 8.0
Ubuntu	64-bit: Ubuntu 20.04, 18.04, 16.04, 14.04, and 12.04 Server
EulerOS	64-bit: EulerOS 2.5, 2.3, and 2.2
Red Hat	64-bit: Red Hat 6.10, 6.9, 6.8, 6.7, 6.6, 6.5, and 6.4 64-bit: Red Hat 7.9, 7.8, 7.6, 7.5, 7.4, 7.3, 7.2, 7.1, and 7.0 64-bit: Red Hat 8.0
SUSE Linux Enterprise	64-bit: SLES 11 SP4 and 11 SP3 64-bit: SLES 12 SP4, 12 SP3, 12 SP2, 12 SP1, and 12 64-bit: SLES 15, 15 SP1, and 15 SP2
Debian	64-bit: Debian 8.0.0–8.10.0 64-bit: Debian 9.13.0, 9.12.0, 9.11.0, 9.9.0, 9.8.0, 9.7.0, 9.6.0, 9.5.0, 9.4.0, 9.3.0, and 9.0.0 64-bit: Debian 10.0.0–10.5.0, 10.7.0
openSUSE	64-bit: openSUSE 13.2 64-bit: openSUSE Leap 15.1 and 15.0 64-bit: openSUSE Leap 42.3, 42.2, and 42.1
Fedora	64-bit: Fedora 22–32
CoreOS	64-bit: CoreOS 2079.4.0
FreeBSD	64-bit: FreeBSD 11.0, 10.3, and 12.1
openEuler	64-bit: openEuler 20.03

Table 6-2 Supported OS versions

OS	OS Version
CentOS	64-bit: CentOS 6 CentOS 7 CentOS 8
Ubuntu	64-bit: Ubuntu 14.04 Server Ubuntu 16.04 Server Ubuntu 18.04 Server Ubuntu 20.04 Server
EulerOS	64-bit: EulerOS 2.2 EulerOS 2.3 EulerOS 2.5
Red Hat	64-bit: Red Hat 6 Red Hat 7
SUSE Linux Enterprise	64-bit: SLES 11 SLES 12
Debian	64-bit: Debian 8 Debian 9
openSUSE	64-bit: openSUSE 15.0 openSUSE 15.1
Fedora	64-bit: Fedora 2x
openEuler	64-bit: openEuler 20.03

Table 6-3 Supported OS versions

OS	OS Version
CentOS	64-bit: CentOS 6 CentOS 7 CentOS 8
Ubuntu	64-bit: Ubuntu 14.04 Server Ubuntu 16.04 Server Ubuntu 18.04 Server Ubuntu 20.04 Server
EulerOS	64-bit: EulerOS 2.2 EulerOS 2.3 EulerOS 2.5
Red Hat	64-bit: Red Hat 6 Red Hat 7
SUSE Linux Enterprise	64-bit: SLES 11 SLES 12 SLES 15
Debian	64-bit: Debian 8 Debian 9 Debian 10
openSUSE	64-bit: openSUSE 15.0 openSUSE 15.1
Fedora	64-bit: Fedora 2x Fedora 3x
openEuler	64-bit: openEuler 20.03

Table 6-4 Supported OS versions

OS	OS Version
CentOS	64-bit: CentOS 7
Ubuntu	64-bit: Ubuntu 14.04 Server Ubuntu 16.04 Server Ubuntu 18.04 Server Ubuntu 20.04 Server
EulerOS	64-bit: EulerOS 2.2 EulerOS 2.3
SUSE Linux Enterprise	64-bit: SLES 12
Debian NOTE IR3 ECSs do not support Debian.	64-bit: Debian 8 Debian 9

Kunpeng ECSs

Table 6-5 lists the OSs supported by the following ECSs:

- Kunpeng general computing-plus KC1
- Kunpeng memory-optimized KM1

Table 6-5 Supported OS versions

OS	OS Version
CentOS	64-bit: CentOS 7.6, 7.5, and 7.4 64-bit: CentOS 8.0
Ubuntu	64-bit: Ubuntu 18.04 Server
EulerOS	64-bit: EulerOS 2.8
Red Hat	64-bit: Red Hat 7.6 and 7.5
SUSE Linux Enterprise	64-bit: SLES 12 SP5 and SP4 64-bit: SLES 15
openSUSE	64-bit: openSUSE Leap 15.0
Fedora	64-bit: Fedora 29

OS	OS Version
Debian	64-bit: Debian 10.2.0
openEuler	64-bit: openEuler 20.03
KylinSec	64-bit: KylinSec 3.3
Kylin	64-bit: Kylin 3.2 64-bit: Kylin 4.0 64-bit: Kylin 4.2
NeoKylin	64-bit: NeoKylin 7.6

6.2 External Image File Formats and Supported OSs

External File Formats

Image files in VMDK, VHD, QCOW2, RAW, VHDX, QED, VDI, QCOW, ISO, ZVHD2, or ZVHD format can be used to create private images. Select whichever format best meeting your requirements.

Supported OSs

When you upload an external image file to an OBS bucket on the management console, the OS contained in the image file will be checked.

If the OS cannot be identified or is not supported:

- For Linux, **Other_Linux (64_bit)** or **Other_Linux (32_bit)** will be selected during image registration.

Related Operations

For how to upload external image files, see [Uploading an External Image File \(Windows\)](#) and [Uploading an External Image File \(Linux\)](#).

After an external image file is successfully uploaded, you can register this image file as a private image on the cloud platform. For details, see [Registering an External Image File as a Private Image \(Windows\)](#) and [Registering an External Image File as a Private Image \(Linux\)](#).

6.3 OSs Supporting UEFI Boot Mode

The ECS boot mode can be BIOS or UEFI. For details about the differences between them, see [How Is BIOS Different from UEFI?](#)

[Table 6-6](#) lists the OSs that support the UEFI boot mode.

Table 6-6 OSs supporting UEFI boot mode

OS	Version
Windows	Windows Server 2019 Datacenter 64bit
	Windows Server 2019 Standard 64bit
	Windows Server 2016 Standard 64bit
	Windows Server 2016 Datacenter 64bit
	Windows Server 2012 R2 Standard 64bit
	Windows Server 2012 R2 Datacenter 64bit
	Windows Server 2012 Essentials R2 64bit
	Windows Server 2012 Standard 64bit
	Windows Server 2012 Datacenter 64bit
	Windows 10 64bit
Ubuntu	Ubuntu 19.04 Server 64bit
	Ubuntu 18.04 Server 64bit
	Ubuntu 16.04 Server 64bit
	Ubuntu 14.04 Server 64bit
Red Hat	Red Hat Linux Enterprise 7.4 64bit
	Red Hat Linux Enterprise 7.3 64bit
	Red Hat Linux Enterprise 7.1 64bit
	Red Hat Linux Enterprise 7.0 64bit
	Red Hat Linux Enterprise 6.9 64bit
	Red Hat Linux Enterprise 6.6 32bit
	Red Hat Linux Enterprise 6.5 64bit
Oracle Linux	Oracle Linux Server release 7.4 64bit
	Oracle Linux Server release 6.9 64bit
openSUSE	openSUSE 42.1 64bit
SUSE	SUSE Linux Enterprise Server 12 SP5 64bit
	SUSE Linux Enterprise Server 12 SP1 64bit
	SUSE Linux Enterprise Server 11 SP3 64bit
Fedora	Fedora 29 64bit
	Fedora 24 64bit

OS	Version
Debian	Debian GNU/Linux 8.8.0 64bit
CentOS	CentOS 7.6 64bit
	CentOS 7.5 64bit
	CentOS 7.4 64bit
	CentOS 7.0 64bit
	CentOS 6.9 64bit
	CentOS 6.6 64bit
EulerOS	EulerOS 2.8 64bit
	EulerOS 2.5 64bit
	EulerOS 2.3 64bit
	EulerOS 2.2 64bit
openEuler	openEuler 20.03 64bit
NeoKylin	NeoKylin V7 64bit
UnionTech	UOS 20 64bit

7 Billing

Billing of Different Image Types

Image Type	Billing
Private	<ul style="list-style-type: none"> System disk image, ISO image, or data disk image: free OBS buckets invisible to users are provided for free to store the images. Full-ECS image: charged for the storage on CSBS or CBR. If the image is created from a CSBS or CBR backup, you will be billed for the space used to store the CSBS or CBR backup.
Shared	<ul style="list-style-type: none"> If it is a system or data disk image, the OBS storage is free. If it is a full-ECS image, you will be billed for the space used to store the CBR backup. <p>NOTE Full-ECS images created from a CBR backup can be shared but those created from a CSBS backup cannot.</p>

Billing of Private Image Operations

Operation	Billing Item
Uploading an external image file to an OBS bucket	OBS storage (You are advised to delete unneeded image files.)
Creating an ECS from a system disk image or full-ECS image	EVS disks attached to the created ECS (The system disk image and full-ECS image are free of charge.) For example, when you use a full-ECS image (with a 40 GB system disk and 100 GB data disk) to create an ECS, you will be charged based on the total size of the system disk and data disk.

Operation	Billing Item
Replication of a system or data disk image within a region	None. OBS buckets are available for free to store the image copies.
Exporting images	OBS space for storing the exported images

Reference

- For OBS pricing details, see [OBS Pricing Details](#).
- For CSBS pricing details, see [CSBS Pricing Details](#).
- For CBR pricing details, see [CBR Pricing Details](#).
- For EVS pricing details, see [EVS Pricing Details](#).

8 Permissions

If you need to assign different permissions to personnel in your enterprise to access your IMS resources, Identity and Access Management (IAM) is a good choice for fine-grained permissions management. IAM provides identity authentication, permissions management, and access control, helping you secure access to your resources.

With IAM, you can create IAM users and assign permissions to control their access to specific resources. For example, if you want some software developers in your enterprise to use IMS resources but do not want them to delete the resources or perform any other high-risk operations, you can create IAM users and grant permission to use the resources but not permission to delete them.

If your account does not require individual IAM users for permissions management, you can skip this section.

IAM is a free service. You pay only for the resources in your account. For more information about IAM, see [What Is IAM?](#)

IMS Permissions

New IAM users do not have any permissions assigned by default. You need to first add them to one or more groups and attach policies or roles to these groups. The users then inherit permissions from the groups and can perform specified operations on cloud services based on the permissions they have been assigned.

IMS is a project-level service deployed for specific regions. When you set **Scope** to **Region-specific projects** and select the specified projects in the specified regions, the users only have permissions for IMS resources in the selected projects. If you set **Scope** to **All resources**, the users have permissions for IMS resources in all region-specific projects. When accessing IMS, the users need to switch to the authorized region.

You can grant permissions by using roles and policies.

- **Roles:** A coarse-grained authorization strategy provided by IAM to assign permissions based on users' job responsibilities. Only a limited number of service-level roles are available for authorization. Cloud services depend on each other. When you grant permissions using roles, you also need to attach

any existing role dependencies. Roles are not ideal for fine-grained authorization and least privilege access.

Table 8-1 System-defined IMS roles

Role	Description	Dependencies
IMS Administrator	Administrator permissions for IMS	This role depends on the Tenant Administrator role.
Server Administrator	Permissions for creating, deleting, querying, modifying, and uploading images	This role depends on the IMS Administrator role in the same project.

- **Policies (recommended):** A fine-grained authorization strategy that defines permissions required to perform operations on specific cloud resources under certain conditions. This type of authorization is more flexible and is ideal for least privilege access. For example, you can grant users only the permission to manage IMS resources of a certain type.

A majority of fine-grained policies contain permissions for specific APIs, and permissions are defined using API actions. For the API actions supported by IMS, see [Permissions and Supported Actions](#).

Table 8-2 System-defined policies for IMS

Policy	Description	Dependencies
IMS FullAccess	All permissions for IMS	None
IMS ReadOnlyAccess	Read-only permissions for IMS. Users with these permissions can only view IMS data.	None

Table 8-3 lists the common operations supported by system-defined permissions for IMS.

Table 8-3 Common operations supported by system-defined permissions

Operation	IMS FullAccess	IMS ReadOnlyAccess	IMS Administrator (Depending on Tenant Administrator)
Creating images	√	x	√
Deleting images	√	x	√
Querying images	√	√	√
Updating image information	√	x	√

Helpful Links

- [What Is IAM?](#)

9 Basic Concepts

9.1 Region and AZ

Concept

A region and availability zone (AZ) identify the location of a data center. You can create resources in a specific region and AZ.

- Regions are divided based on geographical location and network latency. Public services, such as Elastic Cloud Server (ECS), Elastic Volume Service (EVS), Object Storage Service (OBS), Virtual Private Cloud (VPC), Elastic IP (EIP), and Image Management Service (IMS), are shared within the same region. Regions are classified into universal regions and dedicated regions. A universal region provides universal cloud services for common tenants. A dedicated region provides specific services for specific tenants.
- An AZ contains one or more physical data centers. Each AZ has independent cooling, fire extinguishing, moisture-proof, and electricity facilities. Within an AZ, computing, network, storage, and other resources are logically divided into multiple clusters. to support high-availability systems.

Selecting a Region

If your target users are in Europe, select the **EU-Dublin** region.

Selecting an AZ

When deploying resources, consider your applications' requirements on disaster recovery (DR) and network latency.

- For high DR capability, deploy resources in different AZs within the same region.
- For lower network latency, deploy resources in the same AZ.

9.2 Common Image Formats

IMS supports multiple image formats, but the system uses ZVHD or ZVHD2 by default.

Table 9-1 lists the common image formats.

Table 9-1 Common image formats

Image Format	Description	Remarks
ZVHD	ZVHD is a format developed by HUAWEI CLOUD. This format uses the ZLIB compression algorithm and supports sequential read and write.	A universal format supported by IaaS OpenStack; a format supported for imported and exported images NOTE ZVHD image files do not support lazy loading. To import large ZVHD image files fast, convert them into ZVHD2 files first.
ZVHD2	ZVHD2 is a format developed by HUAWEI CLOUD. This format uses the ZSTD algorithm and supports lazy loading.	A format for the lazy loading feature; a format supported for imported images
QCOW2	This is a disk image supported by the QEMU simulator. It is a file that indicates a block device disk of a fixed size. Compared with the RAW format, the QCOW2 format has the following features: <ul style="list-style-type: none">• Supports a lower disk usage.• Supports Copy-On-Write (CoW). The image file only reflects disk changes.• Supports snapshots.• Supports zlib compression and encryption by following Advanced Encryption Standard (AES).	A format supported for imported and exported images
VMDK	VMDK is a virtual disk format from VMware. A VMDK file represents a physical disk drive of the virtual machine file system (VMFS) on an ECS.	A format supported for imported and exported images

Image Format	Description	Remarks
RAW	A RAW file can be directly read and written by ECSs. This format delivers higher I/O performance but does not support dynamic space expansion.	A format supported for imported images
QCOW	QCOW manages the space allocation of an image through the secondary index table. The secondary index uses the memory cache technology and needs the query operation, which results in performance loss. The performance of QCOW is inferior to that of QCOW2, and the read and write performance is inferior to that of RAW.	A format supported for imported images
VDI	VDI is the disk image file format used by the VirtualBOX virtualization software from Oracle. It supports snapshots.	A format supported for imported images
QED	The QED format is an evolved version of the QCOW2 format. Its storage location query mode and data block size are the same as those of the QCOW2 format. However, QED implements Copy-On-Write (CoW) in a different way as it uses a dirty flag to replace the reference count table of QCOW2.	A format supported for imported images

10 Related Services

Figure 10-1 shows the relationships between IMS and other services.

Figure 10-1 IMS relationships with other services

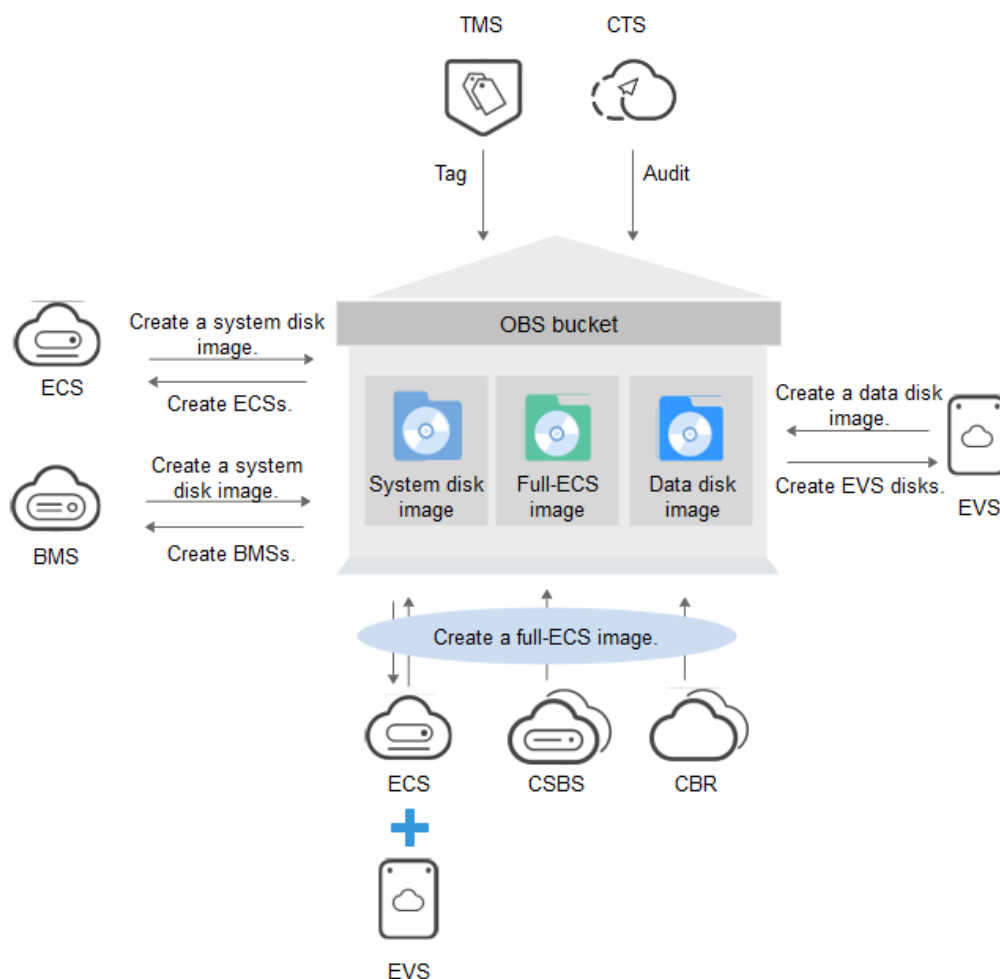


Table 10-1 Related services

Service	Relationship with IMS	Related Operation
Elastic Cloud Server (ECS)	You can use an image to create ECSs or use an ECS to create an image.	<ul style="list-style-type: none">• Creating an ECS from an Image• Creating a System Disk Image from a Linux ECS• Creating a Full-ECS Image from an ECS
Bare Metal Server (BMS)	You can use an image to create BMSs or use a BMS to create an image.	<ul style="list-style-type: none">• Creating a BMS from a Private Image• Creating a Private Image from a BMS• Creating a Private Image from an External Image File
Object Storage Service (OBS)	Images are stored in OBS buckets. External image files to be uploaded to the system are stored in OBS buckets, and private images are exported to OBS buckets.	<ul style="list-style-type: none">• Uploading an External Image File (Windows)• Exporting an Image
Data Encryption Workshop (DEW)	Images can be encrypted through envelope encryption of DEW to ensure data security. The keys used for encrypting images are stored in DEW.	Encrypting Images
Elastic Volume Service (EVS)	You can create a data disk image using a data disk of an ECS. The created data disk image can be used to create other EVS disks.	Creating a Data Disk Image from an ECS
Cloud Server Backup Service (CSBS)	You can use a CSBS backup to create a full-ECS image.	Creating a Full-ECS Image from a CSBS Backup
Cloud Backup and Recovery (CBR)	You can use a CBR backup to create a full-ECS image.	Creating a Full-ECS Image from a CBR Backup

Service	Relationship with IMS	Related Operation
Tag Management Service (TMS)	You can add tags to images for convenient classification and search.	Tagging an Image
Cloud Trace Service (CTS)	CTS records IMS operations for query, auditing, or backtracking.	IMS Operations Recorded by CTS

11 Change History

Released On	Description
2023-08-03	<p>This issue is the third official release.</p> <p>Modified the following content:</p> <ul style="list-style-type: none">• Added Red Hat 7.9 and 7.8 in OSs Supported by Different Types of ECSs.• Updated constraints in Constraints.
2023-07-20	<p>This issue is the second official release.</p> <p>Modified the following content:</p> <p>Modified the constraints on private images with a 32-bit OS in Constraints.</p> <p>Added Kylin OS series in OSs Supported by Different Types of ECSs.</p> <p>Added notes that ZVHD and VHD image files do not support lazy loading in Common Image Formats.</p>
2022-08-30	<p>This issue is the first official release.</p>